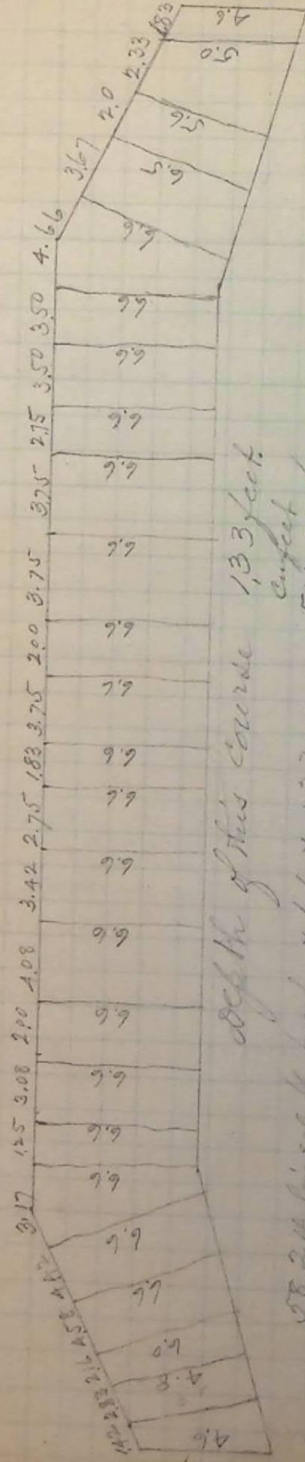


Footings course North Side 133 High (Oct 8-90)
Arrangement of Stones in face on Cellular Work.

E ← → W

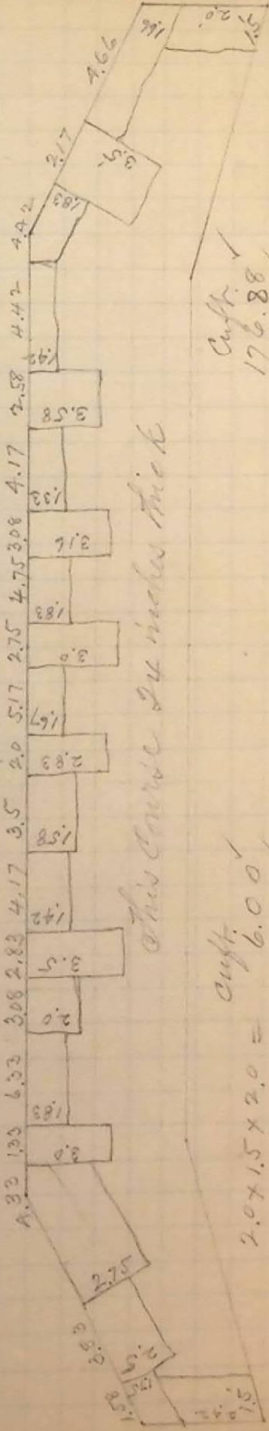


depth of this course 133 feet

Stones	depth of this course	133 feet
58.24. in. sq ft. front	$6.6 \times 1.33 =$	511.22 ✓
"	$6.0 \times 1.33 =$	17.24 ✓
"	$4.8 \times 1.33 =$	18.07 ✓
"	$4.6 \times 1.33 =$	19.88 ✓
"	$5.0 \times 1.33 =$	15.49 ✓
"	$5.6 \times 1.33 =$	14.90 ✓
"	$6.5 \times 1.33 =$	31.73 ✓
		<u>3/628.53</u>
		9209.51
		23.28 cu yds.

First course above footing course No. 1st Cyclon Riv Bridge
Arrangement of stones in face on Cellular Work.

E ← → W



depth of this course 24 inches thick

Stones	depth of this course	24 inches thick
2.0 x 1.5 x 2.0	$6.00 =$	176.88 ✓
4.66 x 1.66 x 2.0	$15.47 =$	11.06 ✓
2.17 x 3.5 x 2.0	$15.19 =$	11.84 ✓
4.42 x 1.83 x 2.0	$16.18 =$	19.81 ✓
4.42 x 1.42 x 2.0	$12.33 =$	12.32 ✓
2.58 x 3.58 x 2.0	$18.47 =$	23.17 ✓
4.17 x 1.33 x 2.0	$11.09 =$	7.98 ✓
3.68 x 3.16 x 2.0	$19.46 =$	23.81 ✓
4.75 x 1.83 x 2.0	$17.38 =$	19.15 ✓
2.95 x 3.00 x 2.0	$16.50 =$	5.53 ✓
5.17 x 1.67 x 2.0	$17.27 =$	7.26 ✓
2.0 x 2.53 x 2.0	$11.32 =$	3/318.81 ✓
		<u>9106.27</u>
		17.81 cu yds